

Gypsy & Travelling Community Accommodation Needs Assessment



September 2013

CONTENTS	Page
1. Executive Summary	4
2. Introduction	5
3. Policy Context	7
4. Gypsy and Travelling Communities in the City & County of Swansea	10
5. Primary Data & Survey Methodology	20
6. Questionnaire Results & Stakeholder Comments	22
7. Gypsy and Travelling Communities Accommodation Need	25
8. Conclusions	27

Glossary of Terms

The Assessment	The Gypsy Traveller Accommodation Needs Assessment
Authorised Site	A site that has been granted planning permission, in the instance of this report, the site owned & managed by the Council
Gypsy & Travelling Community	Persons with a cultural tradition of nomadism or living in a caravan; and in all other persons of nomadic habit of life, whatever their race or origin, including <ul style="list-style-type: none"> i) such persons who, on grounds of only their own or their family's or dependent educational or health needs or old age, have ceased to travel temporarily or permanently; and ii) Members of an organised group of travelling showpeople or circus people (whether or not travelling together as such) (Source: Welsh Government (Housing) (Assessment of Accommodation Needs) (Meaning of Gypsies & Travellers) (Wales) Regulations 2007)
Local Development Plan (LDP)	The Local Development Plan (LDP) is a strategic level planning document that sets out the broad approach the Council intends to take to ensure the City and County of Swansea is developed in a sustainable manner over the period to 2025
Local Housing Strategy (LHS)	The plan that brings together all the issues relating to housing in Swansea, looking at all the actions needed to improve housing in the private and public sectors
Local Authority Site	A site that is owned by the Local Authority
The Niner Report	A Report commissioned by the Welsh Government into the Accommodation Needs of Gypsies & Travellers
Pitch	A space on a site where a caravan can be positioned
Private Site	A site that is owned and managed privately
Unauthorised & Tolerated Site	A site that is being used without planning permission
Encampment	Residing at roadsides or on private/ public land not owned by G&TCs which does not have planning permission
Bricks & Mortar	Permanent mainstream housing

1. Executive Summary

Introduction

- 1.1 This needs assessment has been undertaken for two reasons:
- a. There is a requirement to consider this Assessment in developing planning policy through Development Plans under the Planning and Compulsory Purchase Act 2004.
 - b. The Housing Act 2004 requires Local Authorities to consider the Gypsy & Travelling Community (G&TC) accommodation needs in developing housing policy.
- 1.2 The Assessment has been conducted in accordance with the relevant Welsh Government guidance and considers a range of G&TC groups found in the City & County of Swansea in both authorised, unauthorised and private sites, as well as in “bricks and mortar” housing. Data has been drawn from:
- Face to face survey results from questionnaires with G&TCs;
 - Secondary information, including literature reviews and secondary data analysis.
- The aim of this Assessment is to quantify the accommodation needs of G&TCs in terms of residential and transit pitches for the next five years. This time frame is suggested by the Welsh Government guidance¹. The results will be used as evidence to inform the allocation of resources and policy development in both Housing and Planning areas across the City & County of Swansea.
- 1.3 There is one authorised G&TC site in the City & County of Swansea, one unauthorised & tolerated site and two encampments. There are also several privately owned or temporary leased sites. Recent figures² obtained from the Welsh Government illustrated that there are ten Authorities in Wales with higher G&TC caravan counts than the City and County of Swansea.
- 1.4 This Assessment has concluded that there is currently a need for 11 extra pitches and up to 28 additional pitches could be required over the next 5 years. However, this is dependant on a range of factors that are difficult to predict with accuracy such as whether teenage gypsies and travellers currently living with their parents will marry in the next 5 years and whether they will choose to continue to live in Swansea.

¹ Local Housing Market Assessment Guidance, Welsh Government

² Gypsy and Traveller Caravan Count January 2013, Welsh Government

2. Introduction

Study context

- 2.1 From April 2013 to August 2013 surveys of the G&TCs views on accommodation were undertaken to provide the primary data for this Assessment. The purpose of this Assessment is to quantify the accommodation needs of the G&TC in terms of residential and transit sites, and bricks and mortar accommodation.
- 2.2 The data collection and the analysis has followed best practice guidance set out by the Welsh Government in its 'Local Housing Market Assessment Guide' (March 2006).
- 2.3 The research has drawn on a number of data sources including:
 - A review of secondary information, including a literature review and secondary data analysis
 - A survey of G&TCs living on sites/ encampments and in bricks and mortar accommodation
 - Consultation with organisations involved with G&TC issues

Policy Background

- 2.4 There is a national shortage of pitches for G&TCs. A study in 2006 for the Welsh Government entitled 'the Niner Report'³, stated that from 2005 to 2010 between 250 and 400 additional permanent pitches would be required across Wales, as well as 100 to 150 transit pitches. It is not clear how many pitches have been actually provided during this period.
- 2.5 The Housing Act 2004 requires local authorities to assess the needs of G&TCs in their area and to develop strategies to meet those needs. It also states that, where there is a shortage of sites, Local Authorities are expected to make this a priority.
- 2.6 In producing development plans for their areas, Local Authorities are also required to assess the adequacy of G&TC accommodation⁴.
- 2.7 The Niner Report contains important statements regarding the nature of need. It states that G&TC accommodation needs can extend beyond those of the settled community to reflect their distinctive accommodation requirements. This includes bricks and mortar dwelling

³ Niner, P. (2006) Accommodation Needs of Gypsy-Travellers in Wales, Welsh Government

⁴ Welsh Government Circular 30/2007, Planning for Gypsy and Traveller Caravan Sites

households 'whose existing accommodation is overcrowded or unsuitable'⁵.

Who does the study cover?

2.8 In December 2007 the Welsh Government published the *Housing (Assessment of Accommodation Needs) (Meaning of Gypsies and Travellers) (Wales) Regulations 2007*. The Regulations state that for the purpose of accommodation assessments, G&TCs should be defined as:

- *Persons with a cultural tradition of nomadism or of living in a caravan; and*
- *All other persons of a nomadic habit of life, whatever their race or origin, including -*
 - i) *such persons who, on grounds only of their own or their family's or dependant's educational or health needs or old age, have ceased to travel temporarily or permanently; and*
 - ii) *members of an organised group of travelling show people or circus people (whether or not travelling together as such).*

⁵ 'unsuitable' in this context can include unsuitability by virtue of a proven psychological aversion to bricks and mortar accommodation - Niner, P. (2006) *Accommodation Needs of Gypsy- Travellers in Wales*, Welsh Government, para. 15

3. The Policy Context

Introduction

- 3.1 Under the measures introduced in the Housing Act 2004, Local Authorities are required to include G&TC in their Local Housing Needs Assessment process. The Welsh Government Planning Circular 30/2007 requires local authorities to identify appropriate sites in Development Plans for G&TC accommodation.
- 3.2 A study commissioned by the Welsh Government⁶ found a considerable shortage of accommodation for G&TCs across the country.

Housing and planning legislation and guidance

- 3.3 The Housing Act 2004 requires local housing authorities to produce a housing assessment that takes into account the accommodation needs of the G&TC. This includes the need for authorised sites for their caravans, and to have a strategy in place which sets out how any identified G&TC need will be met as part of an authority's housing strategy.
- 3.4 The Welsh Government Guidance on Gypsy and Travelling Community Accommodation Assessments notes that the definition of 'housing need' in mainstream cases is 'households in unsuitable housing who cannot access suitable accommodation in the market'. In terms of G&TC needs, the Guidance notes that the same principle can be applied to bricks and mortar accommodation with a consequent need for a pitch.
- 3.5 All G&TC sites, including those provided by local authorities, must have planning permission and Circular 30/2007 "Planning for Gypsy and Traveller Caravan Sites" strengthens the requirement that local authorities identify and make provision for appropriate sites in their local plans.
- 3.6 Circular 30/2007 sets out a new definition of G&TCs that is based on 'nomadic habit' and includes all those who are too ill or old to have a nomadic lifestyle. It also places a new emphasis on consulting G&TCs, their representative bodies and local support groups in the planning process.
- 3.7 Consultation is also stressed in the Local Housing Market Assessment Guide⁷ which highlights the need to work with local communities throughout the document. Appendix F of that Guide provides advice on assessing the accommodation needs of G&TCs.

⁶ Niner, P. (2006) Accommodation Needs of Gypsy-Travellers in Wales, Welsh Government

⁷ *Local Housing Market Assessment Guide*, Welsh Government, March 2006

- 3.8 As Circular 30/2007 outlines, the Gypsy Traveller Accommodation Needs Assessment is integral to the planning process. These requirements are reiterated in Planning Policy Wales (Edition 3, 2010). Ultimately, this Assessment will inform the preparation of the Local Development Plan.
- 3.9 Section 318 of the Housing and Regeneration Act 2008 (c.17) amends section 5 of the Mobile Homes Act 1983 (“the 1983 Act”) so as to bring land occupied by a local authority as a caravan site providing accommodation for gypsies and travellers within the definition of protected sites for the purposes of the 1983 Act. The provisions give greater security to occupants of such sites and makes the occupancy more akin to those of private caravan sites.

Other Legislation

- 3.10 In addition to housing-specific legislation and guidance, there is a range of other policies relevant to G&TC accommodation matters. These place duties on local authorities to recognise and meet the needs of minority and disadvantaged groups. Gypsies were recognised as an ethnic group and brought within the Race Relations Act in 1989 through case law and Travellers came under the Act in 2000. The Race Relations Act has now been superseded by The Equality Act 2010.
- 3.11 The Human Rights Act 1998 transposed the European Convention on Human Rights (ECHR) into UK law. Public authorities – including local authorities – must act in a way that is compatible with this. In particular, local planning authorities should consider the consequences of refusing or granting planning permission, or taking enforcement action, on the rights of the individuals concerned, and whether the chosen action is necessary and proportionate.
- 3.12 The Equality Act 2010 brings together and replaces the previous anti-discrimination laws with a single Act. The Act includes the public sector equality duty which replaced the separate duties on race, disability and gender equality. This came into force on 5th April 2011. The public sector equality duty covers a number of protected characteristics including race which (as above) includes Gypsies and Travellers.

Through the duty public bodies are required to have due regard to the need to:

- eliminate unlawful discrimination, harassment and victimisation and other conduct prohibited by the Act
- advance equality of opportunity between people who share a relevant protected characteristic and those who do not

- foster good relations between people who share a protected characteristic and those who do not.

3.13 Homelessness legislation also takes into account the needs of G&TCs. Part VI of the Housing Act 1996 states that a person is homeless if he has accommodation but cannot secure entry to it, or if it consists of a movable structure and there is no place where he is entitled or permitted both to place and to reside in it.

4. Gypsy & Travelling Communities in the City & County of Swansea

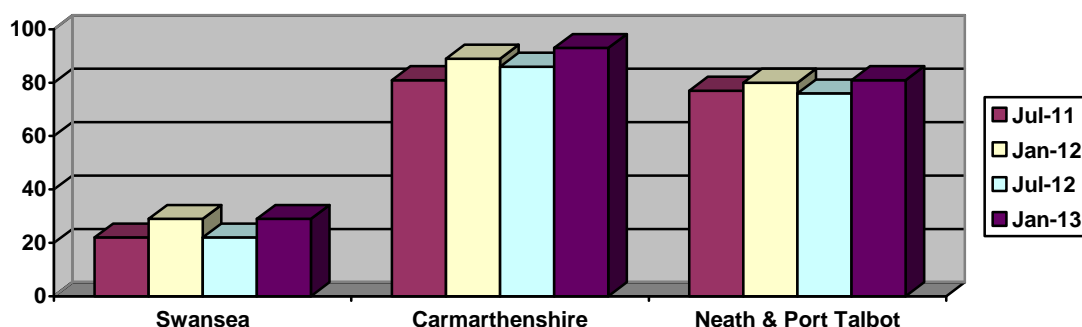
Introduction

- 4.1 This section examines what information is available on the current Gypsy Traveller population in the City & County of Swansea. The information is sourced from the national Gypsy Traveller Caravan Count, previous research and locally collected information from planning applications and enforcement notices.

Gypsy & Travelling Communities Caravan Count

- 4.2 The G&TCs Caravan Count presents the number of Gypsy & Travelling Community caravans on authorised, unauthorised & tolerated sites and encampments. The Caravan Count also details the number of pitches each local authority provides. The Caravan Count was re-introduced in Wales in July 2006 after recommendations from two Welsh Government reports.^{8 9} The Caravan Count is conducted every 6 months in January and July.

Fig.1: Total caravans on authorised, unauthorised & tolerated sites and encampments in Swansea, Carmarthenshire and Neath & Port Talbot, Jan 2011 – Jan 2013 (Source: Welsh Government Caravan Count)



- 4.3 The graph above shows the data from the Caravan Counts from July 2011 until January 2013 for Swansea, Carmarthen and Neath & Port Talbot (the two counties bordering Swansea). The graphs show the total number of caravans identified on the authorised and unauthorised & tolerated sites and encampments.
- 4.4 The graph illustrates that in Swansea the number of caravans has increased over the period. The numbers of caravans has also increased slightly in Carmarthenshire over the same period whereas the Neath & Port Talbot figures are more constant.

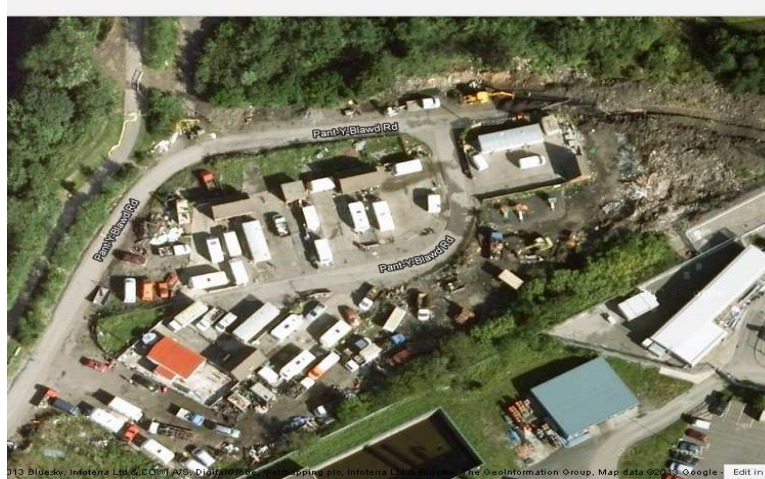
⁸ Welsh Government (2003), Review of Service Provision for Gypsies and Traveller

⁹ Niner. P (2006) Accommodation Needs of Gypsy-Travellers in Wales, Welsh Government

Authorised Local Authority Site

- 4.5 There is currently one authorised site in operation that is owned and managed by the City & County of Swansea. The Ty Gwyn Traveller site on Pant-Y-Blawd Road (*fig.2*) is in the Llansamlet Ward. The site has formally been in existence since the early 1980s. It has 7 pitches, where seven separate households currently live.

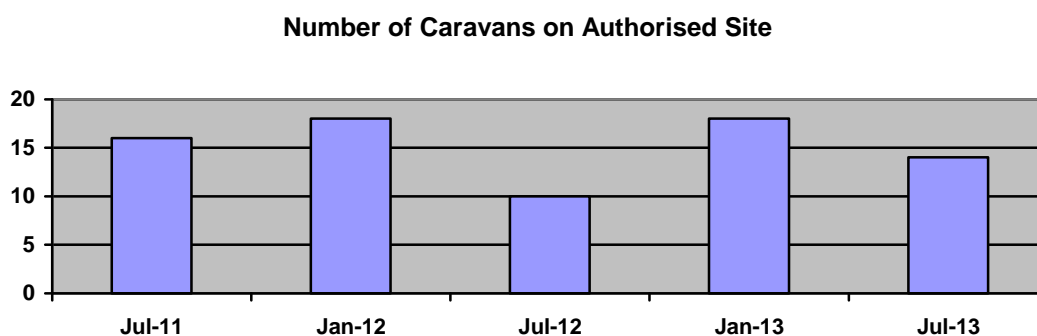
Fig.2: Ty Gwyn Gypsy Traveller Site, Pant-y-Blawd Road, Llansamlet



— Highlights the Ty Gwyn site at Pant-y-Blawd Road

4.6 Fig.3 shows that the number of caravans on the authorised site has remained constant since July 2011. The slight increase in caravan numbers from July 2012 – Jan 2013 suggests families are growing and using more caravans. Pitches are not limited to one caravan, so there may be several caravans on one pitch for one family.

Fig.3: Number of Caravans on the authorised site in Swansea, July 2011 – July 2013
(Source: Welsh Government Caravan Count Jan 2011- Jan 2013; July 2013 figures from The Assessment)



4.7 An assessment of the proximity of the authorised Local Authority site to services is shown below (fig.4). The authorised Local Authority site has good access to key services. The site is within one mile of five different primary schools, one secondary school and three GP surgeries.

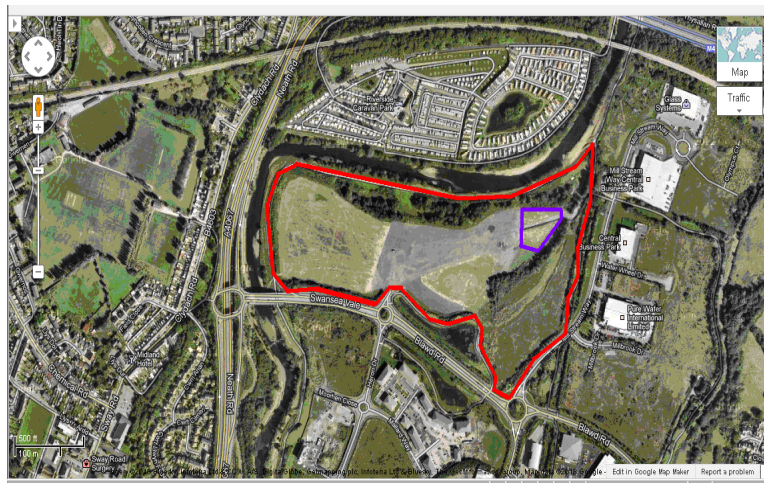
Fig.4: Proximity of Ty Gwyn site to service

Site Name	No. of primary schools within 1 mile	No. of primary schools over 1 mile but within 2 miles	No. of secondary schools within 1 mile	No. of secondary schools over 1 mile but within 2 miles	No. of GP surgeries within 1 mile	No. of GP surgeries over 1 mile but within 2 miles
Ty Gwyn	5	3	1	1	3	2

Unauthorised & Tolerated Site and Encampments

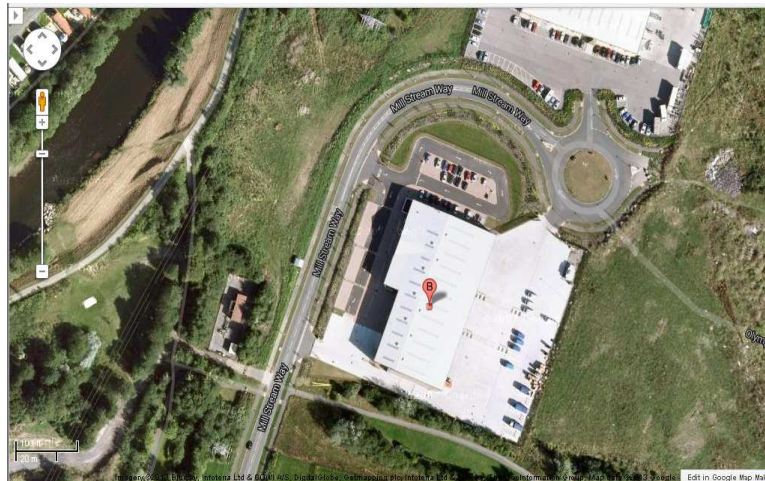
- 4.8 Over the last year the Council has been aware of one unauthorised & tolerated site and two encampments in Swansea. The unauthorised & tolerated site at Swansea Vale (fig 5) has portable toilets, showers, water supply, gas and electricity. The encampments at Mill Stream Way (fig.6) and Olympus Court (fig.6) do not have any amenities. Both encampments and the unauthorised & tolerated site are in the Llansamlet ward.

Fig.5: Unauthorised & tolerated site at Swansea Vale which is in the Llansamlet ward of the city, approximately 6.5 km north-east of the city centre.



- Highlights the whole area of land at Swansea Vale that has been used for occupation by members of the Gypsy & Travelling Community
- Highlights the specific area of land currently used as an unauthorised & tolerated site by members of the Gypsy & Travelling Community

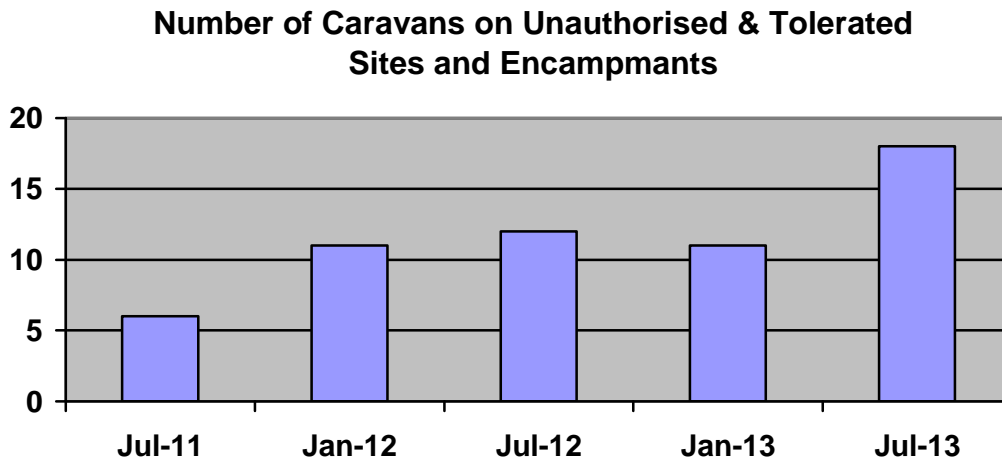
Fig.6: Encampments at Mill Stream Way and Olympus Court, Llansamlet



- Highlights land off Olympus Court currently used as an encampment by members of the Gypsy & Travelling Community
- Highlights land off Mill Stream Way currently used as an encampment by members of the Gypsy & Travelling Community

4.9 Fig.7 shows the number of caravans on the unauthorised & tolerated site and encampments identified by the Welsh Government Caravan Count (July 2011- Jan 2013). The figures from July 2013 are those identified from the Assessment. The number has remained fairly constant but there has been an increase over the past six months.

Fig.7: Number of caravans on unauthorised & tolerated site and encampments in Swansea, July 2011 – July 2013, and additional figures from July 2013 (Source: Welsh Government Caravan Count and the Assessment 2013)



Privately Owned Sites

There are two sites within the City and County of Swansea which are privately owned (excluding those occupied by Travelling Showmen Communities):

- 4.10 Site no1 has 7 pitches and currently hosts 13 caravans. The site is owned and occupied by several members of the same family who have lived there for over 25 years.
- 4.11 Site no2 is the contact address for an extended family that has recently been awarded 5 year temporary planning permission for a private site. Temporary planning permission was granted for four pitches and will accommodate four separate households.

Travelling Showmen Communities

- 4.12 The official website of the Showmen's Guild of Great Britain states the following;

"This guild is well aware that assessments of need are being carried out throughout the country, under the heading of Gypsy & Traveller Accommodation Assessments.

The guild is keen to ensure its members are represented in these reports. We are anxious to be involved in these assessments at every level. From field work and interviews, to spatial strategies and everything in between. Following our regular meetings with the Department for Communities & Local Government, we feel it is imperative that these reports are as accurate & informative of showmen's accommodation need as possible.

With this in mind we urge anyone carrying out these assessments, to contact their regional office of the showmen's guild.

Showmen should have a separate section within each report specifically dedicated to their circumstances and needs. This is necessary as showmen's needs differ significantly from any other traveller group. The impact of vehicle overcrowding on a site, vehicle overcrowding is an issue unique to showmen and one that must be addressed when carrying out an assessment."¹⁰

- 4.13 In order to undertake the Assessment with local Travelling Showmen's Groups, contact was made with the Secretary of the South Wales branch (Peter Jones). Mr Jones liaised with all known Travelling Showmen's families in the City & County of Swansea to establish any current or potential accommodation needs.
- 4.14 At the time of the assessment there were four known Travelling Showmen groups on four separate sites in the City & County of Swansea. Two of the sites are privately owned, one is temporary leased from the Council and the other privately leased. All families responded to attempts to contact them aside from families living on one of the privately owned sites.
- 4.15 Site no3 is a small privately owned site hosting one extended family. The residents undertook their own assessment and did not identify any accommodation needs.

¹⁰ Information taken from the official Showmen's Guild of Great Britain website; www.showmensguild.co.uk

- 4.16 Site no4 is situated on Council land that is temporary leased. There are five separate households, most of who have lived there for over 20 years, and are fully integrated into the local community. They would like to purchase the land if planning permission could be achieved. All residents living there undertook the Assessment and did not have any accommodation needs at present but were concerned about the lease being extended in the future, if they are unable to purchase the land. There is a private site adjacent to Site no4 but the families residing there did not respond to attempts to contact them and therefore did not undertake the Assessment.
- 4.17 Site no5 is a privately leased site hosting two separate households. Contact was made to the families currently resident at the site but they did not have any accommodation needs at present and would soon be moving out of the Swansea area. Subsequently, it was agreed that there was no need to undertake the Assessment.

Gypsy & Travelling Communities living in bricks and mortar accommodation

- 4.18 The Assessment includes six separate households who are resident in Swansea and made known to the Authority by members of the G&TC. Attempts were made to contact all six households and of these;
- 2 separate households undertook the Assessment
 - 3 failed to respond to attempts to contact
 - 1 household said they did not want to take part

Summary

- 4.19 There is sufficient information to provide a reasonably accurate estimate of the number and location of G&TC caravans currently in the City & County of Swansea area. However, due to their transient culture, it is difficult to establish a definitive figure on the overall G&TC population at any given time.
- 4.20 The Welsh Government Caravan Count illustrates that Swansea has the 11th largest number of G&TC caravans and the 10th largest quantity of pitches in Wales.

5. Primary Data & Survey Methodology

- 5.1 This section describes the primary research elements of the Assessment. These comprise a survey and consultation of G&TCs living on authorised, unauthorised & tolerated, private sites, encampments and in bricks & mortar accommodation.
- 5.2 The primary data is based on surveys of the G&TC views on their accommodation needs. The purpose of this Assessment is to quantify the accommodation needs of the G&TC in terms of residential and transit sites, and bricks and mortar accommodation.
- 5.3 The data collection and analysis has followed the practice guidance set out by the Welsh Government in their 'Local Housing Market Assessment Guide' (March 2006).
- 5.4 To achieve the study aims, the research drew on a number of data sources including:
- Survey of G&TCs living on sites, encampments and in bricks and mortar accommodation
 - Review of secondary information and secondary data analysis
 - Consultation with organisations involved with G&TC issues and G&TCs themselves.

Survey Methodology

- 5.5 The survey and assessment of G&TC accommodation was conducted in line with Welsh Government guidance.
- 5.6 A questionnaire¹¹ was developed featuring a range of G&TC topics such as accommodation and amenity needs, gender profiles, frequency of travel, etc.
- 5.7 A target of identifying and accessing all known G&TC sites and assessing all contactable families was set.
- In total;
- 44 separate households were initially contacted
 - 33 surveys were completed
 - 5 households initially responded but then did not respond to meeting requests
 - 2 households responded to say they were moving out of the area
 - 3 households failed to respond to all contact attempts
 - 1 household did not want to take part

¹¹ A copy of the questionnaire can be requested as a separate document

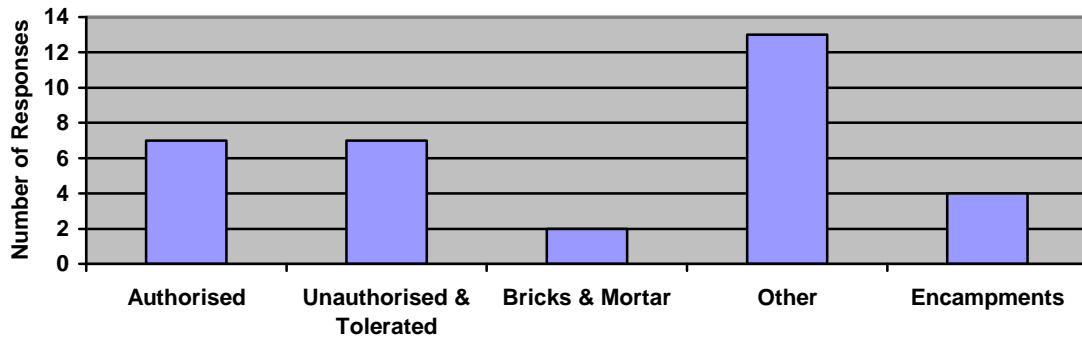
Interviewers and fieldwork strategy

- 5.8 Interviews took place between April and August 2013. Where required, the Education Welfare Officer and the Secretary of the South Wales branch of the Showmen's Guild were used to introduce families.
- 5.9 Several families living in bricks & mortar accommodation were identified via participants nominating other members of the G&TC who may have been interested in taking part in the research. Such referrals benefited from the extensive family and friendship networks that exist within the Gypsy & Travelling Community.
- 5.10 For the assessments at the authorised, unauthorised & tolerated sites and encampments, a spokesperson was nominated by the Community. At the request of the families residing there, one family member from each household was also present during the assessments to ensure a collective, uniform approach.

6. Questionnaire Results and Stakeholder Comments

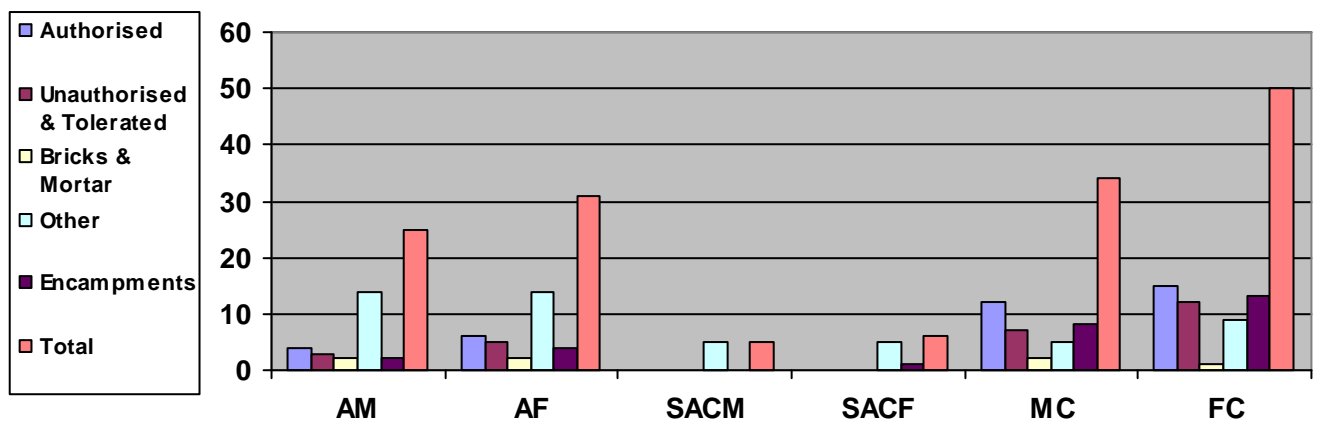
- 6.1 This section examines the data from the questionnaire and includes comments from the stakeholders in the relevant sections
- 6.2 The total number of respondents who undertook the questionnaire was 33 (fig.14).

Fig.14: Graph detailing questionnaire response rate



- 6.3 The overall number of responses for the authorised, unauthorised & tolerated site and encampments 18. The number of households living on these sites and encampments at the time the survey was conducted was 18; a response rate of 100%
- 6.4 The overall total of adults, single adult children (+18yrs) and children living in different tenures recorded via those who undertook the questionnaire process was 151 (fig.15).

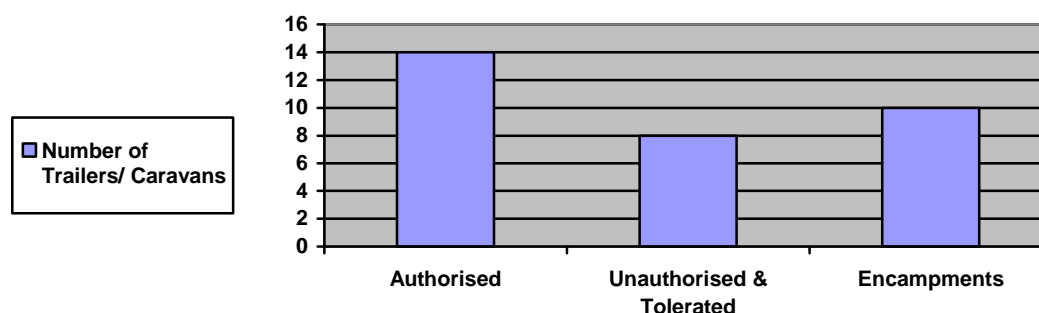
Fig.15: Graph showing split of Adult Males (AM), Adult Females (AF), Single Adult Child Male (SACM), Single Adult Child Female (SACF), Male Children (MC), Female Children (FC) and tenure



Responses from Gypsy & Travelling Communities living on authorised, unauthorised & tolerated sites and encampments

- 6.5 There were 14 trailers/ caravans at the authorised site, an average of 2 per pitch/ household (*fig.16*).
- 6.6 There were 8 trailers/ caravans on the unauthorised & tolerated site and 10 trailers/ caravans on the encampments, an average of 1.6 per household (*fig.16*).

Fig.16: Graph showing number of trailers/ caravans at authorised, unauthorised & tolerated sites and encampments



- 6.7 Very few of the households living on the authorised, unauthorised & tolerated sites and encampments travel at all. The majority said they occasionally travel to see relatives or to attend G&TC events, such as Stow and Appleby Horse Fairs but they consider the sites and encampments they occupy to be their homes.
- 6.8 All respondents living on the authorised site said they were very satisfied with the site and were very happy with the amenities they had been provided with. They were also very satisfied with the recycling collection and postal service. All respondents said they were very satisfied with the locality of the site as it was easily accessible for local shops, GP surgeries, schools and church.
- 6.9 Respondents living on the unauthorised & tolerated site at Swansea Vale were very satisfied with the location of the site and hoped to remain there on a permanent basis. However, they were not happy with the lack of security, limited water supply, lack of electric supply and the postal service, and they requested additional toilets. The respondents stressed that they maintain the site in good order and would continue to do so in the hope that the site would be granted official status. Their preference was for any future site to be owned and managed by the Local Authority. The respondents said they would live on a prospective new site only with members of their extended family and did not want the site to be a mix of residential and transit pitches (residential only). The respondents also stressed they had lived in the Llansamlet area for the past 25 years or so and considered this area to be their home.

- 6.10 Respondents living on the encampments were satisfied with the locations of the encampments but stressed how much they were in need of an authorised site with full amenities. The respondents' preference was for any future site to be owned and managed by the Local Authority and ideally any new site would be in the Swansea Vale/ Llansamlet area. The respondents would like to live on a prospective new site only with members of their extended family. They did not want a new site to have any transit pitches as they felt "others passing through" would not "look after the site in the same way as permanent residents". Similarly to the families living on the unauthorised & tolerated site, the families living on encampments have lived in and around the Llansamlet area for the past 20 years and considered this area to be their home.
- 6.11 The respondents on Site no1 are members of one extended family who have owned the land for over 25 years. The respondents may need to expand the site in the future but said they did not have any plans for that in the next 5 years. The respondents stressed they are fully integrated into the local community, their children attend the local schools, they all use local facilities and subsequently, they have no intention of moving from this site.
- 6.12 Attempts were made to contact the six known respondents living in bricks & mortar accommodation. However, only two households responded (one household previously said they did not want to be contacted by the Council to undertake the Assessment). Full assessments were not completed at the request of the respondents as they wanted to continue living in bricks & mortar accommodation and had no intention of returning to a site in the next 5 years. Therefore, it was agreed they did not have any current accommodation needs.
- 6.13 There were four Travelling Showpeople sites identified, and households from three of these sites undertook the Assessment. One site is temporarily leased from the Council and the households living there wanted to know how to enquire about purchasing the land and/or other land. Another site is owned and the households living there did not have any accommodation needs at present but may look to expand the site in the future. Again, they fully intend purchasing their own land. Respondents from the third site said they were privately leasing and were soon moving permanently out of the Swansea area. It was mutually agreed that there was no need to complete a full assessment at this time.

7. Gypsy and Travelling Community Accommodation Need

Results

7.1 Following the Assessment, the tables below illustrate both the current accommodation need and the accommodation need over the next 5 years.

Fig.18: Authorised, Unauthorised & Tolerated, Private Sites, Encampments & Bricks and Mortar Information

Site Address	Site Type	Adults	Children	Total Number of Households	No. of Caravans/ Trailers	Current Pitch Requirement	Additional Pitch Requirement in 5yrs
Ty Gwyn, Llansamlet	Council	10	27	7	14	0	7
Swansea Vale (Park & Ride), Llansamlet	Unauthorised (Tolerated)	8	19	7	8	7	2
Mill Stream Way, Llansamlet	Encampment	4	16	3	5	3	3
Olympus Court, Llansamlet	Encampment	2	6	1	5	1	4
Site no1	Private	14	14	7	13	0	0
Site no2	Private	8	3	4	0	0	4
Various	Bricks & Mortar ¹²	7 (+3)	8 (+4)	4 (+2)	0	0	0
Total		53 (+3)	93 (+4)	33 (+2)	45	11	20

¹²Figures in brackets relate to 2 separate G&TC households known to the Council but who declined to take part in the Assessment

Fig.19: Travelling Showmen Community Sites

Site Address	Site Type	Adults	Children	Households	No. of Caravans/ Trailers	Current Pitch Requirement	Additional Pitch Requirement in 5 years
Site no4	Temporary Lease	9	8	5	10	0	6
Adjacent to Site no4	Private	-	-	-	-	-	-
Site no3	Private	3	0	1	3	0	2
Site no5	Leased	4	-	2	-	-	-
Total		16	8	8	13	0	8

The following are a list of definitions for fig.18 & fig.19

Current Pitch Requirement

The figure for the current pitch requirement if a new site was developed immediately

Additional Pitch Requirement

The figure for the potential future pitch requirement is if a site was developed in 5 years time. This incorporates the existing need and all children listed in the above table that will be aged 18+ in the next 5 years. Traditionally, children marry fairly young within the culture, hence the base age being set at 18.

No. of Caravans/ Trailers

The most recent official Caravan Count was undertaken in January 2013 and the total figure was 29. However, new private sites have come to light since then, hence the current figure being higher.

Households

The number of separate households living on the respective sites/ and or other accommodation. Each household will require one pitch.

8. Conclusions

- 8.1 There are several known Gypsy & Travelling Community groups in the City & County of Swansea.
- 8.2 There are some issues concerning the supply of accommodation for those households who have a current need for pitch requirement. However, The Council is currently in the process of identifying suitable site provision to cater for the identified need within the County.
- 8.3 There is a high level of satisfaction with the authorised Local Authority site.
- 8.4 **There is evidence of an immediate need for 11 pitches in the Swansea area**
- 8.5 There is evidence of a potential need of up to 28 additional pitches in the Swansea area for the period 2013-2018 (***see Appendix 1 for detailed calculations and Figures 18 and 19 for a summary of the data***).
- 8.6 The potential additional 28 pitches include;
- 4 pitches planned for the private site recently granted temporary planning permission.
 - 8 separate households from the Travelling Showmen Community on the assumption that all children listed in the Assessment aged 18+ in the next 5 years marry and form their own separate households. However, this community's preference is to own their own site and they are highly unlikely to move onto sites with non Travelling Showmen families.
 - 16 additional households if all children listed in the Assessment living on the Authorised, Unauthorised & Tolerated Sites and Encampments aged 18+ in the next 5 years marry and form their own separate households.